



PHILIP D. MURPHY
Governor
SHEILA Y. OLIVER
Lt. Governor

State of New Jersey
THE PINELANDS COMMISSION
PO Box 359
NEW LISBON, NJ 08064
(609) 894-7300
www.nj.gov/pinelands



RICHARD PRICKETT
Chairman
NANCY WITTENBERG
Executive Director

General Information: Info@pinelands.nj.gov
Application Specific Information: AppInfo@pinelands.nj.gov

MEMORANDUM

To: Members of the Commission

From: Nancy Wittenberg
Executive Director

Date: July 3, 2019

Subject: Summary of the July 12, 2019 Meeting Packet

Minutes

The June 14, 2019 Commission Meeting minutes (open and closed sessions) and attachments are included in your packet.

Public Development Application

There are no Public Development applications on this month's agenda.

Waiver of Strict Compliance

There are no Waivers of Strict Compliance applications on this month's agenda.

Letter of Interpretation

Two Pinelands Development Credit (PDC) Letter of Interpretation (attached) were issued since the last Commission meeting, allocating 69.75 PDCs to 6,639.39 acres.

Off-Road Vehicle Event Route Map Approval

Two Off-Road Vehicle Event Route Map Approvals (attached) were issued since the last Commission meeting.

Master Plans and Ordinances Not Requiring Commission Action

We have included a memorandum on five ordinance amendments that we reviewed and found to raise no substantial issues with respect to Comprehensive Management Plan standards. These amendments were submitted by Barnegat Township, Monroe Township and Washington Township.

Other Items

Also included in this month's packet is:

1. A memorandum from the Regulatory Programs office that finds one public development application to be consistent with an existing Memorandum of Agreement (MOA)

Closed Session

The Commission may need to convene into closed session.

Please note that future meetings and office closure dates, as well as any Pinelands-related activities of interest, are listed at the bottom of the agenda.

/ PC1



State of New Jersey
THE PINELANDS COMMISSION
PO Box 359
NEW LISBON, NJ 08064
(609) 894-7300
www.nj.gov/pinelands



PHILIP D. MURPHY
Governor
SHEILA Y. OLIVER
Lt. Governor

General Information: Info@pinelands.nj.gov
Application Specific Information: AppInfo@pinelands.nj.gov

RICHARD PRICKETT
Chairman
NANCY WITTENBERG
Executive Director

NEW JERSEY PINELANDS COMMISSION MEETING AGENDA

Friday, July 12, 2019

Richard J. Sullivan Center for Environmental Policy and Education
Terrence D. Moore Conference Room
15C Springfield Road
New Lisbon, New Jersey
9:30 a.m.

1. Call to Order
 - Open Public Meetings Act Statement
 - Roll Call
 - Pledge Allegiance to the Flag
2. Election of Vice-Chair
3. Committee Assignments
4. Adoption of Minutes
 - June 14, 2019 (open and closed sessions)
5. Committee Chairs' and Executive Director's Reports
6. Matters for Commission Consideration *Where the Record is Closed*
 - A. Permitting Matters
 - Office of Administrative Law
 - None
 - Review of Local Approval
 - None
 - Public Development Projects and Waivers of Strict Compliance
 - None

B. Planning Matters

- Municipal Master Plans and Ordinances
 - None
- Other Resolutions
 - None
- CMP Amendments
 - None

7. Public Comment on Public Development Applications, Waivers of Strict Compliance, and *Where the Record is Not Closed.*

A. Public Development Projects

- **Application No. 1981-1470.007** – Ocean County
Two lot subdivision with no development
Jackson Township
- **Application No. 1986-1408.008** – Borough of Woodbine
Improvements to an existing potable water treatment facility
Borough of Woodbine
- **Application No. 1990-1174.011** – Monroe Township
Installation of an irrigation well at the Owens Park recreational facility
Monroe Township
- **Application No. 2000-0637.003** – Washington Township
Construction of 10 paved parking spaces at the Washington Township Municipal Building
Washington Township
- **Application No. 2006-0322.002** – New Jersey Department of Transportation
Construction of an electronic traffic advisory sign within the Route 47 right-of-way
Dennis Township
- **Application No. 2008-0026.002** – New Jersey Department of Transportation
Extension of an existing stormwater drainage system with the U.S. Route 30 right-of-way
Egg Harbor City & Mullica Township
- **Application No. 2008-0026.003** – New Jersey Department of Transportation
Installation of approximately 980 linear feet of sidewalk within the U.S. Route 30 right-of-way
Egg Harbor City
- **Application No. 2019-0053.001** – New Jersey Department of Transportation
Construction of an electronic traffic advisory sign within the Route 47 right-of-way
Maurice River Township

B. Waivers of Strict Compliance

- None

8. Master Plans and Ordinances Not Requiring Commission Action

- Barnegat Township Ordinance 2019-8
- Barnegat Township Ordinance 2019-9
- Monroe Township Ordinance O:13-2019
- Washington Township Ordinance 2017-08
- Washington Township Ordinance 2018-4

9. General Public Comment

10. Resolution to Retire into Closed Session (if needed) – Personnel, Litigation and Acquisition Matters (*The Commission reserves the right to reconvene into public session to take action on closed session items.*)

11. Adjournment

Upcoming Meetings

Unless otherwise noted, all meetings/events are conducted at the offices of the Pinelands Commission in New Lisbon

Wed., July 17, 2019 Land Use, Climate Impacts & Sustainability Committee Meeting (9:30 a.m.)
 Fri., July 26, 2019 Policy and Implementation Committee Meeting (9:30 a.m.)
 Fri., August 9, 2019 Pinelands Commission Meeting (9:30 a.m.)

Events of Interest

Pinelands Summer Short Course - Kramer Hall, Hammonton, NJ - July 18, 2019

Pinelands Municipal Council Meeting and Pinelands Orientation-
 New Lisbon, NJ - Richard J. Sullivan Center - July 23, 2019 at 4:00 p.m.

To ensure adequate time for all members of the public to comment, we will respectfully limit comments to three minutes. Questions raised during this period may not be responded to at this time but where feasible, will be followed up by the Commission and its staff.

Pinelands Commission and Committee meeting agendas are posted on the Commission's Web site and can be viewed at www.nj.gov/pinelands/. The agendas are also posted and can be viewed at the Pinelands Commission Offices, 15 Springfield Road, New Lisbon, New Jersey or for more information on agenda details, e-mail the [Public Programs Office](mailto:Info@pinelands.nj.gov) at Info@pinelands.nj.gov or call (609) 894-7300.

PINELANDS COMMISSION MEETING
Richard J. Sullivan Center
Terrence D. Moore Conference Room
15 Springfield Road
New Lisbon, New Jersey

MINUTES

June 14, 2019

Commissioners Present

Alan W. Avery Jr., Daniel Christy, Jordan P. Howell, Jerome H. Irick, Ed Lloyd, Mark Lohbauer, William Pikolycky and Chairman Richard Prickett. Also present were Executive Director Nancy Wittenberg, Governor's Authorities Unit representative Craig Ambrose and Deputy Attorney General (DAG) Kristina Miles.

Commissioners by Phone

Candace M. Ashmun

Commissioners Absent

Sean Earlen, Jane Jannarone, Gary Quinn and D'Arcy Rohan Green.

Chairman Prickett called the meeting to order at 9:34 a.m.

DAG Miles read the Open Public Meetings Act Statement (OPMA).

The Commission and public in attendance pledged allegiance to the Flag.

Executive Director Nancy Wittenberg called the roll and announced the presence of a quorum. (There were nine Commissioners who participated in the meeting.)

Minutes

Chairman Prickett presented the open session minutes from the May 10, 2019 Commission meeting and part 2 of the closed session minutes. Commissioner Lohbauer moved the adoption of the minutes. Commissioner Avery seconded the motion.

The May 10, 2019 Commission meeting minutes including part 2 of the closed session minutes were adopted by a vote of 9 to 0.

Chairman Prickett presented part 1 of the closed session minutes from the May 10, 2019 Commission meeting. Commissioner Avery moved the adoption of the minutes. Commissioner Lohbauer seconded the motion.

The May 10, 2019 closed session part 1 Commission meeting minutes were adopted by a vote of 8 to 0. Commissioner Lloyd abstained from the vote.

Committee Chairs' Reports

Chairman Prickett provided an update on the May 31, 2019 Policy and Implementation Committee meeting:

The Committee adopted the minutes of the March 29, 2019 meeting.

The Committee approved the Rancocas Conservancy's request for payment in advance of closing on a 200-acre site in Pemberton Township. Closing is anticipated by June 21st.

This is the last of four Pinelands Conservation Fund projects from the 2017 acquisition round.

The Committee recommended Commission certification of Dennis Township Ordinance 2019-01, revising the boundaries of Belleplain and Dennisville Villages.

The Committee advanced Pemberton Township Ordinances 12-2019 and 13-2019 to the full Commission without a recommendation due to lack of a quorum.

The Committee endorsed the Science Office's grant application to the Environmental Protection Agency for a study of the eastern kingsnake.

The Committee received a presentation on proposed Comprehensive Management Plan (CMP) amendments for coordinated permitting and public development applications.

Staff presented a 10-year review of the CMP Forest and Rural Development Area clustering regulations and will provide potential CMP amendments to address specific issues at a future meeting.

Executive Director's Reports

ED Wittenberg provided an update on the following items:

- An emergency authorization was issued to the Town of Hammonton after consultation with the Chairman. An adjacent property owner alerted the town that treated wastewater was discharging onto their property. The town plans to relocate the groundwater discharge pipe to the Boyer Avenue facility to alleviate the problem. The Town of Hammonton will apply to the Commission for the development after the fact.
- The ED spoke to the Chamber of Commerce Southern New Jersey's Environmental Committee.
- The Pinelands Municipal Council held a meeting on May 21st and had a quorum. The Council had a lengthy discussion about municipal tax assessments at the County level.
- The tour of the Buena Borough Wastewater Treatment facility was very interesting. Commissioner Irick and Chairman Prickett attended the tour.
- Union negotiations continue. The next negotiation meeting is scheduled for June 25th.

Chairman Prickett said at the May Commission meeting staff mentioned an upcoming meeting with Hammonton, and he was curious if the emergency was the reason for the meeting.

Director Horner said, although the emergency was discussed, Hammonton officials met with staff to discuss the feasibility of using some portion of the Frog Rock Golf Course for an expansion of the Town's wastewater infiltration facility.

Director Liggett provided an update on the following:

- Ground penetrating radar gear was purchased to assist staff with archaeology field work. The Science Office will also use the equipment.
- Staff attended a meeting at the Infrastructure Bank with representatives of the Bank, the Department of Transportation and the Department of Environmental Protection. The meeting was held to address an issue with the process. The Department of Environmental Protection has delayed adoption of rule changes necessary for the Commission to award Pinelands Infrastructure Trust Funds to water supply and transportation projects in addition to wastewater projects. It was determined that a waiver process in place at NJDEP can be used to allow the projects to be awarded funds without the rule changes. Staff will continue to move forward and will next advise the P&I Committee of the selected projects and hold a public hearing. Then the Pinelands Infrastructure Trust Master Plan will be amended to include the approved projects.

Director Chuck Horner provided information on the following regulatory matters:

- Staff met with Berlin Township officials to discuss a development that was approved many years ago and was inadvertently built 2,000 square feet larger than permitted. In order to resolve the matter, public sanitary sewer will be installed to serve the site.

- Staff held a pre-application conference with an applicant interested in establishing a soccer facility in Southampton Township at the corner of Route 530 and Route 206. The Pinelands Protection Act was amended to allow field sports as a low intensity recreational use in the Agricultural Production Area.
- Staff is involved in a municipal court matter in which a farm owner in Mullica Township is using the property as a wedding venue. The weddings have caused traffic problems in the town. The farm owner raised the issue with the Atlantic County Agricultural Board as Right to Farm. The Board said it is not protected under Right to Farm and sent it back to municipal court.
- Staff is trying to resolve a matter in Egg Harbor Township where 129 mobile home units were developed and are currently served by on-site septic systems. As part of subsequent subdivision application and affordable housing settlement agreement, two adjacent parcels were deed restricted in order to meet the ground water quality rules included in the CMP. The deed restriction can only be lifted once the mobile home park is served by public sanitary sewer. The township has applied to Green Acres for a grant to expand a municipal park onto one of the deed restricted parcels.

Commissioner Lloyd asked if staff knew who planned to purchase the parcel on Route 206 & Route 38, and he asked for information about the size of the parcel.

Director Horner said we believe it is the same organization that operates soccer events in Hammonton Town and Waterford Township.

Chief Planner Susan R. Grogan added that the parcel is over 100 acres and has a Pinelands Development Credit deed restriction.

Commissioner Avery asked if the soccer fields would look like agricultural fields or if they would be altered.

Director Horner said the language in the Act does not permit permanent structures.

Commissioner Avery said the same difficulties that arose in Hammonton and Waterford could occur here, including traffic issues, parking problems and portable bathrooms.

Chief Planner Grogan said that she and ED Wittenberg met with the State Planning Commission to reintroduce themselves and discuss the Commission's role as the State Planning Commission starts plan endorsement and center designations.

Stacey Roth, Chief, Legal & Legislative Affairs, said that the Appellate Division issued an order granting the remand of the South Jersey Gas pipeline matter to the Commission. She said it may be necessary to go into closed session for legal guidance.

Communications Officer Paul Leakan provided an update on the following:

- Enrollment for the 3rd Annual Summer Short Course at Kramer Hall has begun. A tour of Atlantic Blueberry Company will once again be offered.

- Invitations have been sent for the Pinelands Orientation for Newly Elected Officials. The orientation is scheduled for July 23 at the Commission's headquarters and will be combined with the Pinelands Municipal Council meeting.

Public Development Projects and Other Permit Matters

Chairman Prickett presented a resolution recommending approval for the construction of a 3,709 square foot addition to an existing operations building at the Hamilton Township Municipal Utilities Authority.

Commissioner Lohbauer made a motion Approving With Conditions an Application for Public Development (Application Number 1981-0545.013) (See Resolution # PC4-19-21). Commissioner Christy seconded the motion.

The Commission adopted the resolution by a vote of 9 to 0.

Planning Matters

Chairman Prickett presented a resolution related to Dennis Township.

Commissioner Lohbauer made a motion Issuing an Order to Certify Ordinance 2019-01, Amending Chapter 185 (Zoning) of the Code of Dennis Township (See Resolution # PC4-19-22). Commissioner Pikolycky seconded the motion.

The Commission adopted the resolution by a vote of 9 to 0.

Chairman Prickett presented a resolution related to Pemberton Township.

Commissioner Howell said he would be recusing from the next resolution because of the Redevelopment Plan for Rowan College at Burlington County. He said he is employed by Rowan University, which is affiliated with the Rowan College at Burlington County.

Commissioner Avery made a motion Issuing an Order to Certify Pemberton Township Ordinance 12-2019, Adopting the Rowan College at Burlington County Redevelopment Plan, and Ordinance 13-2019, Adopting the Former Burlington County Minimum Security Corrections and Work Release Center Redevelopment Plan (See Resolution # PC4-19-23). Commissioner Christy seconded the motion.

The Commission adopted the resolution by a vote of 8 to 0.

Public Comment on Public Development Applications and Items where the record is open

There were no items to be commented on.

Ordinances Not Requiring Commission Action

Chairman Prickett asked if any Commissioners had questions regarding the ordinances not requiring Commission action:

- Hamilton Township Ordinance 1900-2019
- Monroe Township Ordinance O:12-2019
- Washington Township Ordinance 2018-05
- Washington Township Ordinance 2018-07

No members of the Commission had questions.

Other Resolutions

Chairman Prickett said the next resolution allows the Commission to continue to make necessary purchases and pay bills until the Fiscal Year 2020 budget is adopted.

Commissioner Avery made a motion To Authorize the Executive Director to Continue to Expend Funds for Fiscal Year 2020 at the Same Level of Expenditures as Fiscal Year 2019 until the Adoption of the Fiscal Year 2020 Budget. Commissioner Irick seconded the motion (See Resolution # PC4-19-24).

The Commission adopted the resolution by a vote of 9 to 0.

General Public Comment

Temma Fishman of Medford Lakes quoted a number of articles about the effects of climate change. She said there will be an increase in forest fires, the Southern Pine Beetle may reappear and there will be a decline in endangered species. She asked the Commission to amend the CMP to include climate crisis as a dire threat to the Pinelands. She also asked the Commission to vote in favor of voiding the South Jersey Gas pipeline approval.

Jonathan Peters of the City University of New York raised concerns about public rights-of-way. He said the Katz property has a number of public rights-of-way and wants the Commission to ensure that there will still be public access to the property.

Jay Mounier of Franklin Township thanked Commissioner Barr for his service on the Commission. He said Commissioner Barr was a committed and active member of this Commission.

In response to the first commenter, Commissioner Lohbauer said the Commission created a new Committee to address climate issues.

Chairman Prickett said the Land Use, Climate Impact & Sustainability Committee created by Commissioner Earlen plans to hold a meeting in mid-July.

Resolution to Retire into Closed Session

DAG Miles read a resolution to enter into closed session to discuss the appeals related to the South Jersey Gas matter and a personnel matter.

Commissioner Lohbauer made a motion to enter into closed session. Commissioner Irick seconded the motion. The Commission agreed to retire into closed session by a vote of 9 to 0, beginning at 10:22 a.m.

Return to Open Session

The Commission entered back into open session at 11:15 a.m. DAG Miles provided a summary of the closed session. She said the Commission discussed litigation related to the South Jersey Gas matter and a personnel matter.

Adjournment

Commissioner Lohbauer said he is looking forward to the Summer Short Course.

ED Wittenberg said she was disappointed that Commissioner Barr resigned. She said he was a dedicated Commissioner who came prepared for meetings and was passionate about the Pinelands.

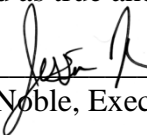
Commissioner Irick agreed with ED Wittenberg. He said Commissioner Barr was a very good Commissioner.

Chairman Prickett said he was sorry Commissioner Earlen wasn't able to make the meeting. He said Commissioner Earlen did a great job running meetings and was always courteous and fair. He thanked Commissioner Earlen for serving as Chairman.

Chairman Prickett added that he was honored to be chosen as Chair.

Commissioner Pikolycky moved to adjourn the meeting. Commissioner Irick seconded the motion. The Commission agreed to adjourn at 11:20 a.m.

Certified as true and correct:



Jessica Noble, Executive Assistant

Date: June 24, 2019



RESOLUTION OF THE NEW JERSEY PINELANDS COMMISSION

NO. PC4-19- 21

TITLE: Approving With Conditions an Application for Public Development (Application Number 1981-0545.013)

Commissioner Lohbauer moves and Commissioner Christy seconds the motion that:

WHEREAS, the Pinelands Commission has reviewed the Public Development Application Report and the recommendation of the Executive Director that the following application for Public Development be approved with conditions:

1981-0545.013

Applicant:	Hamilton Township Municipal Utilities Authority
Municipality:	Hamilton Township
Management Area:	Pinelands Regional Growth Area
Date of Report:	May 24, 2019
Proposed Development:	Construction of a 3,709 square foot addition to an existing operations building.

WHEREAS, no request for a hearing before the Office of Administrative Law concerning the Executive Director's recommendation has been received for this application; and

WHEREAS, the Pinelands Commission hereby adopts the Conclusion of the Executive Director for the proposed development; and

WHEREAS, the Pinelands Commission hereby determines that the proposed public development conforms to the standards for approving an application for public development set forth in N.J.A.C. 7:50-4.57 if the conditions recommended by the Executive Director are imposed; and

WHEREAS, pursuant to N.J.S.A. 13A-5h, no action authorized by the Commission shall have force or effect until ten (10) days, Saturdays, Sundays and public holidays excepted, after a copy of the minutes of the meeting of the Commission has been delivered to the Governor for review, unless prior to expiration of the review period and Governor shall approve same, in which case the action shall become effective upon such approval.

NOW, THEREFORE BE IT RESOLVED that Application Number 1981-0545.013 for public development is hereby **approved** subject to the conditions recommended by the Executive Director.

Record of Commission Votes

AYE NAY NP A/R*				AYE NAY NP A/R*				AYE NAY NP A/R*			
Ashmun	X			Irick	X			Quinn			X
Avery	X			Jannarone		X		Rohan Green			X
Christy	X			Lloyd	X			Prickett	X		
Earlen			X	Lohbauer	X						
Howell	X			Pikolycky	X						

*A = Abstained / R = Recused

Adopted at a meeting of the Pinelands Commission

Date: June 11, 2019

Nancy Wittenberg
Nancy Wittenberg
Executive Director

Richard Prickett
Richard Prickett
Chairman



State of New Jersey

THE PINELANDS COMMISSION

PO Box 359

NEW LISBON, NJ 08064

(609) 894-7300

www.nj.gov/pinelands



PHILIP D. MURPHY
Governor

SHEILA Y. OLIVER
Lt. Governor

General Information: Info@pinelands.nj.gov
Application Specific Information: AppInfo@pinelands.nj.gov

RICHARD PRICKETT
Chairman
NANCY WITTENBERG
Executive Director

May 24, 2019

Stephen Blankenship (via email)
Hamilton Township Municipal Utilities Authority
6024 Ken Scull Avenue
Mays Landing, NJ 08330

Re: Application # 1981-0545.013
Block 809, Lot 31
Hamilton Township

Dear Mr. Blankenship:

The Commission staff has completed its review of this application for construction of a 3,709 square foot addition to an existing operations building. Enclosed is a copy of a Public Development Application Report. On behalf of the Commission's Executive Director, I am recommending that the Pinelands Commission approve the application with conditions at its June 14, 2019 meeting.

Any interested party may appeal this recommendation in accordance with the appeal procedure attached to this document. If no appeal is received, the Pinelands Commission may either approve the recommendation of the Executive Director or refer the application to the New Jersey Office of Administrative Law for a hearing.

Prior to any development, the applicant shall obtain any other necessary permits and approvals.

Sincerely,

Charles M. Horner, P.P.

Director of Regulatory Programs

Enc: Appeal Procedure

c: Secretary, Hamilton Township Planning Board (via email)
Hamilton Township Construction Code Official (via email)
Atlantic County Department of Regional Planning and Development (via email)
Vincent J. Polistina, PE, PP, CME (via email)



State of New Jersey
 THE PINELANDS COMMISSION
 PO Box 359
 NEW LISBON, NJ 08064
 (609) 894-7300
 www.nj.gov/pinelands



PHILIP D. MURPHY
 Governor
 SHEILA Y. OLIVER
 Lt. Governor

General Information: Info@pinelands.nj.gov
 Application Specific Information: AppInfo@pinelands.nj.gov

RICHARD PRICKETT
 Chairman
 NANCY WITTENBERG
 Executive Director

PUBLIC DEVELOPMENT APPLICATION REPORT

May 24, 2019

Stephen Blankenship (via email)
 Hamilton Township Municipal Utilities Authority
 6024 Ken Scull Avenue
 Mays Landing, NJ 08330

Application No.: 1981-0545.013
 Block 809, Lot 31
 Hamilton Township

This application proposes construction of a 3,709 square foot addition to an existing operations building on the above referenced 11.79 acre parcel in Hamilton Township. The Hamilton Township Municipal Utilities Authority (HTMUA) sewage treatment plant was located on the parcel until 1992. The parcel is currently used as a HTMUA operations, maintenance and storage facility.

The application also proposes a 5,990 square foot expansion of an existing approximately 3,100 square foot paved parking area.

STANDARDS

The Commission staff has reviewed the proposed development for consistency with all standards of the Pinelands Comprehensive Management Plan (CMP). The following reviews the CMP standards that are relevant to this application:

Land Use (N.J.A.C. 7:50-5.28(a))

The parcel is located in a Pinelands Regional Growth Area. The proposed development is a permitted land use in a Pinelands Regional Growth Area.

Wetlands Standards (N.J.A.C. 7:50-6.14)

There are wetlands located on the parcel. The proposed development will be located no closer to wetlands than existing development. The proposed development will not result in a significant adverse impact on the wetlands.

Vegetation Management Standards (N.J.A.C. 7:50-6.23 & 6.26)

The proposed development will be located within existing developed and maintained grassed areas. The

proposed soil disturbance is limited to that which is necessary to accommodate the proposed development.

The Landscaping and Revegetation guidelines of the CMP recommend the use of grasses that are tolerant of droughty, nutrient poor conditions. To stabilize disturbed areas, the applicant proposes to utilize a seed mixture which meets that recommendation.

Stormwater Management Standards (N.J.A.C.7:50-6.84(a)6)

The applicant has demonstrated that the proposed development is consistent with the CMP stormwater management standards. To meet the stormwater management standards, the applicant proposes to construct a stormwater infiltration basin.

PUBLIC COMMENT

The applicant has provided the requisite public notice. Notice to required land owners within 200 feet of the above referenced parcel was completed on March 28, 2019. Newspaper public notice was completed on March 30, 2019. The application was designated as complete on the Commission's website on April 12, 2019. The Commission's public comment period closed on May 10, 2019. No public comment was submitted to the Commission regarding this application.

CONDITIONS

1. Except as modified by the below conditions, the proposed development shall adhere to the plan, consisting of eight sheets, prepared by Polistina & Associates, LLC and dated as follows:

Sheet 1 - March 2019
Sheets 2-8 - January 28, 2019, revised to March 27, 2019
2. Disposal of any construction debris or excess fill may only occur at an appropriately licensed facility.
3. Any proposed revegetation shall adhere to the "Vegetation" standards of the CMP. Where appropriate, the applicant is encouraged to utilize the following Pinelands native grasses for revegetation: Switch grass, Little bluestem and Broom-sedge.
4. Prior to any development, the applicant shall obtain any other necessary permits and approvals.

CONCLUSION

As the proposed development conforms to the standards set forth in N.J.A.C. 7:50-4.57, it is recommended that the Pinelands Commission **APPROVE** the proposed development subject to the above conditions.



Philip D. Murphy
Governor

Sheila Y. Oliver
Lt. Governor

State of New Jersey

THE PINELANDS COMMISSION

PO Box 359

NEW LISBON, NJ 08064

(609) 894-7300

www.nj.gov/pinelands

General Information: Info@njpines.state.nj.us
Application Specific Information: AppInfo@njpines.state.nj.us



Sean W. Earlen
Chairman

Nancy Wittenberg
Executive Director

PINELANDS COMMISSION **APPEAL PROCEDURE**

The Pinelands Comprehensive Management Plan (N.J.A.C. 7:50-4.91) provides an interested party the right to appeal any determination made by the Executive Director to the Commission in accordance with N.J.A.C. 7:50-4.91. An interested party is someone who has a specific property interest sufficient to require a hearing on constitutional or statutory grounds. Only appeal requests submitted by someone meeting the definition of an interested party will be transmitted to the New Jersey Office of Administrative Law for a hearing. Any such appeal must be made in writing to the Commission and received at the Commission's office no later than 4:00 PM on June 11, 2019 and include the following information:

1. the name and address of the person requesting the appeal;
2. the application number;
3. the date on which the determination to be appealed was made;
4. a brief statement of the basis for the appeal; and
5. a certificate of service (a notarized statement) indicating that service of the notice has been made, by certified mail, on the clerk of the county, municipal planning board and environmental commission with jurisdiction over the property which is subject of this decision.

Within 15 days following receipt of a notice of valid appeal, the Executive Director shall initiate the procedures for assignment of an Administrative Law Judge to preside at the hearing pursuant to the Administrative Procedures Act, N.J.S.A. 52:14B-1 et seq., and the procedures established by the Office of Administrative Law. The time, date and location of such hearing shall be designated by the Office of Administrative Law.



RESOLUTION OF THE NEW JERSEY PINELANDS COMMISSION

NO. PC4-19- 22

TITLE: Issuing an Order to Certify Ordinance 2019-01, Amending Chapter 185 (Zoning) of the Code of Dennis Township

Commissioner Lohbauer moves and Commissioner Pikolycky seconds the motion that:

WHEREAS, on September 9, 1983, the Pinelands Commission fully certified the Master Plan and Land Use Ordinances of Dennis Township; and

WHEREAS, Resolution #PC4-83-77 of the Pinelands Commission specified that any amendment to the Township's certified Master Plan and Land Use Ordinances be submitted to the Executive Director in accordance with N.J.A.C. 7:50-3.45 (Submission and Review of Amendments to Certified Master Plans and Land Use Ordinances) of the Comprehensive Management Plan to determine if said amendment raises a substantial issue with respect to conformance with the Pinelands Comprehensive Management Plan; and

WHEREAS, Resolution #PC4-83-77 further specified that any such amendment shall only become effective as provided in N.J.A.C. 7:50-3.45 of the Comprehensive Management Plan; and

WHEREAS, on March 26, 2019, Dennis Township adopted Ordinance 2019-01, amending Chapter 185 (Zoning) of the Township's Code by revising the boundaries of the PV (Pinelands Village), PF8 (Moderate-Density Forest) and PF25 (Low-Density Forest) Districts, within the Pinelands Area; and

WHEREAS, the Pinelands Commission received a certified copy of Ordinance 2019-01 on March 27, 2019; and

WHEREAS, by letter dated April 1, 2019, the Executive Director notified the Township that Ordinance 2019-01 would require formal review and approval by the Pinelands Commission; and

WHEREAS, a public hearing to receive testimony on Ordinance 2019-01 was duly advertised, noticed and held on May 1, 2019 at the Richard J. Sullivan Center, 15C Springfield Road, New Lisbon, New Jersey at 9:30 a.m.; and

WHEREAS, the Executive Director has found that Dennis Township Ordinance 2019-01 is consistent with the standards and provisions of the Pinelands Comprehensive Management Plan; and

WHEREAS, the Executive Director has submitted a report to the Commission recommending issuance of an order to certify that Ordinance 2019-01, amending Chapter 185 (Zoning) of the Code of Dennis Township, is in conformance with the Pinelands Comprehensive Management Plan; and

WHEREAS, the Commission's CMP Policy and Implementation Committee has reviewed the Executive Director's report and has recommended that Ordinance 2019-01 be certified; and

WHEREAS, the Pinelands Commission has duly considered all public testimony submitted to the Commission concerning Ordinance 2019-01 and has reviewed the Executive Director's report; and

WHEREAS, the Pinelands Commission accepts the recommendation of the Executive Director; and

WHEREAS, pursuant to N.J.S.A. 13:18A-5h, no action authorized by the Commission shall have force or effect until ten (10) days, Saturdays, Sundays and public holidays excepted, after a copy of the minutes of the meeting of the Commission has been delivered to the Governor for review, unless prior to expiration of the review period the Governor shall approve same, in which case the action shall become effective upon such approval.

NOW, THEREFORE BE IT RESOLVED that

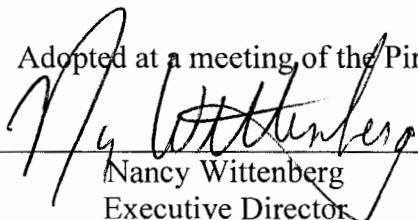
1. An Order is hereby issued to certify that Ordinance 2019-01, amending Chapter 185 (Zoning) of the Code of Dennis Township, is in conformance with the Pinelands Comprehensive Management Plan.
2. Any additional amendments to Dennis Township's certified Master Plan and Land Use Ordinances shall be submitted to the Executive Director in accordance with N.J.A.C. 7:50-3.45 to determine if said amendments raise a substantial issue with respect to the Comprehensive Management Plan. Any such amendment shall become effective only as provided in N.J.A.C. 7:50-3.45.

Record of Commission Votes

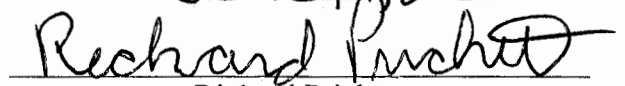
	AYE	NAY	NP	A/R*		AYE	NAY	NP	A/R*		AYE	NAY	NP	A/R*
Ashmun	X				Irick	X				Quinn			X	
Avery	X				Jannarone			X		Rohan Green			X	
Christy	X				Lloyd	X				Prickett	X			
Earlen			X		Lohbauer	X								
Howell	X				Pikolycky	X								

*A = Abstained / R = Recused

Adopted at a meeting of the Pinelands Commission


 Nancy Wittenberg
 Executive Director

Date: June 14, 2019


 Richard Prickett
 Chairman



State of New Jersey
 THE PINELANDS COMMISSION
 PO Box 359
 NEW LISBON, NJ 08064
 (609) 894-7300
 www.nj.gov/pinelands



PHILIP D. MURPHY
 Governor
 SHEILA Y. OLIVER
 Lt. Governor

General Information: Info@pinelands.nj.gov
 Application Specific Information: AppInfo@pinelands.nj.gov

RICHARD PRICKETT
 Chairman
 NANCY WITTENBERG
 Executive Director

**REPORT ON ORDINANCE 2019-01, AMENDING CHAPTER 185 (ZONING)
 OF THE CODE OF DENNIS TOWNSHIP**

May 31, 2019

Dennis Township
 P.O. Box 204
 Dennisville, NJ 08214

FINDINGS OF FACT

I. Background

The Township of Dennis is located in the extreme southern portion of the Pinelands Area, in Cape May County. Pinelands municipalities that abut Dennis Township include the Township of Upper and the Borough of Woodbine in Cape May County and the Township of Maurice River in Cumberland County.

On September 9, 1983, the Pinelands Commission fully certified the Master Plan and Land Use Ordinances of Dennis Township.

On March 26, 2019, Dennis Township adopted Ordinance 2019-01, amending Chapter 185 (Zoning) of the Township's Code by revising the boundaries of the PV (Pinelands Village), PF8 (Moderate-Density Forest) and PF25 (Low-Density Forest) Districts, within the Pinelands Area. The Pinelands Commission received a certified copy of Ordinance 2019-01 on March 27, 2019.

By letter dated April 1, 2019, the Executive Director notified the Township that Ordinance 2019-01 would require formal review and approval by the Pinelands Commission.

II. Master Plans and Land Use Ordinances

The following ordinance has been submitted to the Pinelands Commission for certification:

- * Ordinance 2019-01, amending Chapter 185 (Zoning) of the Code of Dennis Township, introduced on February 26, 2019 and adopted on March 26, 2019.

This amendment has been reviewed to determine whether it conforms with the standards for certification of municipal master plans and land use ordinances as set out in N.J.A.C. 7:50-3.39 of the Pinelands Comprehensive Management Plan. The findings from this review are presented below. The numbers

used to designate the respective items correspond to the numbers used to identify the standards in N.J.A.C. 7:50-3.39.

1. Natural Resource Inventory

Not applicable.

2. Required Provisions of Land Use Ordinance Relating to Development Standards

Ordinance 2019-01 amends Chapter 185 (Zoning) of the Code of Dennis Township by revising the boundaries of the Pinelands Villages of Belleplaine and Dennisville to follow lot lines, recognize existing development and reflect development potential. Ordinance 2019-01 rezones all or portions of several vacant lots from the Pinelands Villages to the Forest Area, in recognition of their status as municipal or State open space and conservation lands. In addition, the ordinance rezones portions of two lots containing an existing municipal recreation facility from the Forest Area to the Pinelands Village of Belleplaine. In total, approximately 12 acres are redesignated from the Forest Area to the Pinelands Village of Belleplaine and 51 acres are redesignated from the two Pinelands Villages to the Forest Area. All of the affected properties are owned by either the Township or the New Jersey Department of Environmental Protection. Details on the two affected Pinelands Villages follow.

Belleplaine

Ordinance 2019-01 rezones Block 31, Lot 5.02 and a portion of Lot 13 from the PF25 (Low-Density Forest) District in the Pinelands Forest Area to the PV (Pinelands Village) District in Belleplaine (see Exhibit #1). These two lots are the site of an existing municipally owned active and passive recreation facility. Known as Chestnut Street Park, the facility currently consists of playgrounds, basketball courts, football fields, bleachers, a concession stand, restrooms, storage sheds, garages, a 200-space paved parking lot, unpaved parking areas and other accessory structures. A portion of Lot 13 is already located in the PV District but the remainder of the lot is in the Forest Area, where the CMP does not permit new intensive recreational facilities and limitations on the expansion of such existing facilities apply. Rezoning the lots to the PV District makes the existing recreational complex a permitted use and allows for its expansion, subject only to the minimum environmental standards of the CMP. In total, approximately 12 acres are rezoned to the PV District, with the resulting zoning boundary now coinciding with lot lines.

Ordinance 2019-01 also rezones a number of lots from the PV District to the adjacent PF25 and PF8 Districts in the Forest Area in recognition of their existing municipal or state ownership and conservation status. One small municipally owned lot is rezoned (Block 32, Lot 6), as are all or portions of nine lots owned by the Department of Environmental Protection and managed as part of Belleplaine State Forest (Block 22, Lots 24, 25 and 27 and p/o Lot 22; Block 31, Lot 25; Block 32, Lots 1, 2, 3 and 5). All of the rezoned properties are forested and vacant. In total, 43 acres are rezoned to the Forest Area, returning the lots to their original management area designation under the Comprehensive Management Plan.

Dennisville

Ordinance 2019-01 rezones Block 57, Lots 13 and 14, from the PV District in Dennisville to the PF25 District in the Forest Area (see Exhibit #2). The two lots total 7.50 acres in size and are owned by the New Jersey Department of Environmental Protection. They were acquired by the State in 2000 along with the adjacent 60-acre property known as Ludlam Mill Pond, which is already located in the Forest Area. A significant portion of Lot 13 is comprised of wetlands, and both Lots 13 and 14 are almost entirely within a 300 foot buffer to wetlands, making any future development on the property extremely unlikely. Rezoning these lots to the Forest Area appropriately recognizes their existing public ownership and lack of development potential.

As a result of the zoning changes adopted by Ordinance 2019-01, 12 acres are added to the Pinelands Village of Belleplain and 51 acres are returned to the Pinelands Forest Area. The revised zoning boundaries better reflect existing development, public ownership and future development potential. They also eliminate the administrative difficulties caused by splitting lots between zones and Pinelands management areas that have very different permitted uses and standards.

The zoning and management area changes adopted by Ordinance 2019-01 are consistent with the land use and development standards of the CMP. This standard for certification is met.

3. Requirement for Certificate of Filing and Content of Development Applications

Not applicable.

4. Requirement for Municipal Review and Action on All Development

Not applicable.

5. Review and Action on Forestry Applications

Not applicable.

6. Review of Local Permits

Not applicable.

7. Requirement for Capital Improvement Program

Not applicable.

8. Accommodation of Pinelands Development Credits

Not applicable.

9. Referral of Development Applications to Environmental Commission

Not applicable.

10. General Conformance Requirements

Ordinance 2019-01, amending Chapter 185 (Zoning) of the Code of Dennis Township, is consistent with the standards and provisions of the Pinelands Comprehensive Management Plan.

This standard for certification is met.

11. Conformance with Energy Conservation

Not applicable.

12. Conformance with the Federal Act

Ordinance 2019-01, amending Chapter 185 (Zoning) of the Code of Dennis Township, is consistent with the standards and provisions of the Pinelands Comprehensive Management Plan. No special issues exist relative to the Federal Act.

This standard for certification is met.

13. Procedure to Resolve Intermunicipal Conflicts

None of the zoning and management area changes adopted by Ordinance 2019-01 involve lands that are adjacent to any other municipalities. This standard for certification is met.

PUBLIC HEARING

A public hearing to receive testimony concerning Dennis Township's application for certification Ordinance 2019-01 was duly advertised, noticed and held on May 1, 2019 at the Richard J. Sullivan Center, 15C Springfield Road, New Lisbon, New Jersey at 9:30 a.m. Ms. Grogan conducted the hearing, at which no testimony was received.

Written comments on Ordinance 2019-01 were accepted through May 6, 2019; however, none were received.

CONCLUSION

Based on the Findings of Fact cited above, the Executive Director has concluded that Ordinance 2019-01 is consistent with Comprehensive Management Plan standards for the certification of municipal master plans and land use ordinances. Accordingly, the Executive Director recommends that the Commission issue an order to certify Ordinance 2019-01 of Dennis Township.

SRG/CDE

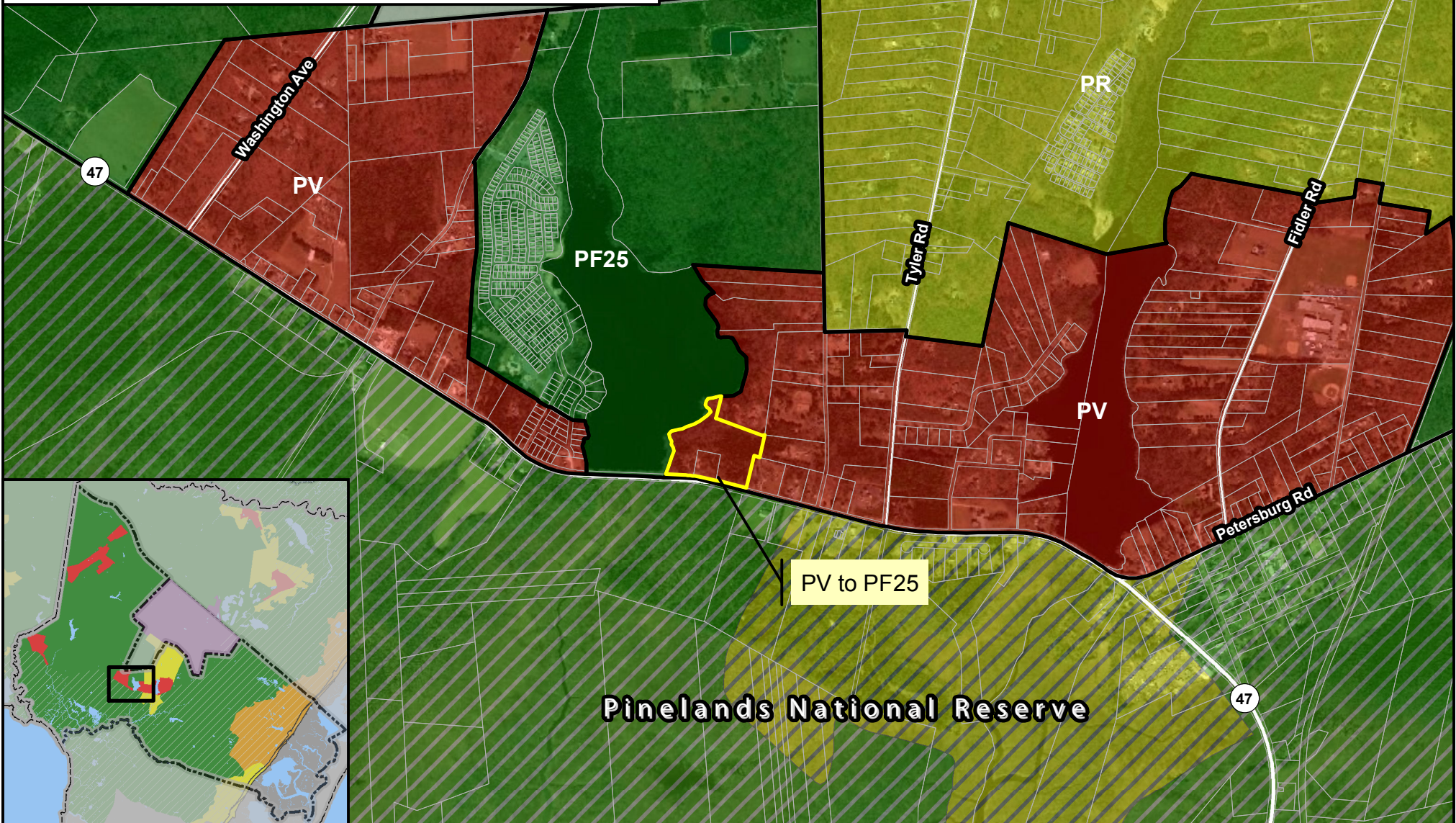
Attachments

Rezoned Lots in Village of Dennisville

Executive Director's Report
Dennis Ordinance 2019-01
Exhibit 2
5/31/2019

- Pinelands Management Areas**
- Forest Area
 - Rural Development Area
 - Pinelands Village
- Existing Zoning**
- Existing Zoning
 - Rezoned Parcels
 - Parcels

0 0.25 0.5 Miles





RESOLUTION OF THE NEW JERSEY PINELANDS COMMISSION

NO. PC4-19- 23

TITLE: Issuing an Order to Certify Pemberton Township Ordinance 12-2019, Adopting the Rowan College at Burlington County Redevelopment Plan, and Ordinance 13-2019, Adopting the Former Burlington County Minimum Security Corrections and Work Release Center Redevelopment Plan

Commissioner Avey moves and Commissioner Christy
seconds the motion that:

WHEREAS, on June 3, 1983, the Pinelands Commission fully certified the Master Plan and Land Use Ordinances of Pemberton Township; and

WHEREAS, Resolution #PC4-83-52 of the Pinelands Commission specified that any amendment to the Township's certified Master Plan and Land Use Ordinances be submitted to the Executive Director in accordance with N.J.A.C. 7:50-3.45 (Submission and Review of Amendments to Certified Master Plans and Land Use Ordinances) of the Comprehensive Management Plan to determine if said amendment raises a substantial issue with respect to conformance with the Pinelands Comprehensive Management Plan; and

WHEREAS, Resolution #PC4-83-52 further specified that any such amendment shall only become effective as provided in N.J.A.C. 7:50-3.45 of the Comprehensive Management Plan; and

WHEREAS, on April 3, 2019, Pemberton Township adopted Ordinance 12-2019, adopting a Redevelopment Plan for the Rowan College at Burlington County Redevelopment Area; and

WHEREAS, on April 3, 2019, Pemberton Township also adopted Ordinance 13-2019, adopting a Redevelopment Plan for the Former Burlington County Minimum Security Corrections and Work Release Center Redevelopment Area; and

WHEREAS, both Redevelopment Areas are located in the Pinelands Area; and

WHEREAS, the Pinelands Commission received certified copies of Ordinances 12-2019 and 13-2019 on April 9, 2019; and

WHEREAS, by letter dated April 15, 2019, the Executive Director notified the Township that Ordinances 12-2019 and 13-2019 would require formal review and approval by the Pinelands Commission; and

WHEREAS, a public hearing to receive testimony on Ordinances 12-2019 and 13-2019 was duly advertised, noticed and held on May 1, 2019 at the Richard J. Sullivan Center, 15C Springfield Road, New Lisbon, New Jersey at 9:30 a.m.; and

WHEREAS, the Executive Director has found that Ordinances 12-2019 and 13-2019 are consistent with the standards and provisions of the Pinelands Comprehensive Management Plan; and

WHEREAS, the Executive Director has submitted a report to the Commission recommending issuance of an order to certify that Pemberton Township Ordinances 12-2019 and 13-2019, adopting the Rowan College at Burlington County and Former Burlington County Minimum Security Corrections and Work Release Center Redevelopment Plans, are in conformance with the Pinelands Comprehensive Management Plan; and

WHEREAS, the Executive Director's report was provided to the Commission's CMP Policy and Implementation Committee and those members present at the Committee's May 31, 2019 meeting indicated support for certification of Ordinances 12-2019 and 13-2019; and

WHEREAS, the Pinelands Commission has duly considered all public testimony submitted to the Commission concerning Ordinances 12-2019 and 13-2019 and has reviewed the Executive Director’s report; and

WHEREAS, the Pinelands Commission accepts the recommendation of the Executive Director; and

WHEREAS, pursuant to N.J.S.A. 13:18A-5h, no action authorized by the Commission shall have force or effect until ten (10) days, Saturdays, Sundays and public holidays excepted, after a copy of the minutes of the meeting of the Commission has been delivered to the Governor for review, unless prior to expiration of the review period the Governor shall approve same, in which case the action shall become effective upon such approval.

NOW, THEREFORE BE IT RESOLVED that

1. An Order is hereby issued to certify that Pemberton Township Ordinance 12-2019, adopting the Rowan College at Burlington County Redevelopment Plan, and Ordinance 13-2019, adopting the Former Burlington County Minimum Security Corrections and Work Release Center Redevelopment Plan, are in conformance with the Pinelands Comprehensive Management Plan.
2. Any additional amendments to Pemberton Township’s certified Master Plan and Land Use Ordinances shall be submitted to the Executive Director in accordance with N.J.A.C. 7:50-3.45 to determine if said amendments raise a substantial issue with respect to the Comprehensive Management Plan. Any such amendment shall become effective only as provided in N.J.A.C. 7:50-3.45.

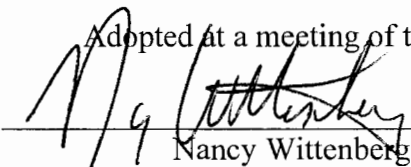
Record of Commission Votes

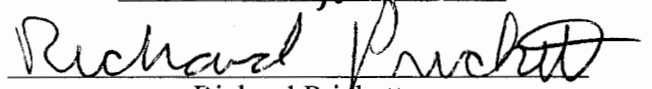
AYE NAY NP A/R*				AYE NAY NP A/R*				AYE NAY NP A/R*			
Ashmun	X			Irick	X			Quinn			X
Avery	X			Jannarone			X	Rohan Green			X
Christy	X			Lloyd	X			Prickett	X		
Earlen			X	Lohbauer	X						
Howell			R	Pikolycky	X						

*A = Abstained / R = Recused

Adopted at a meeting of the Pinelands Commission

Date: June 14, 2019


 Nancy Wittenberg
 Executive Director


 Richard Prickett
 Chairman



State of New Jersey
THE PINELANDS COMMISSION
PO Box 359
NEW LISBON, NJ 08064
(609) 894-7300
www.nj.gov/pinelands



PHILIP D. MURPHY
Governor
SHEILA Y. OLIVER
Lt. Governor

General Information: Info@pinelands.nj.gov
Application Specific Information: AppInfo@pinelands.nj.gov

RICHARD PRICKETT
Chairman
NANCY WITTENBERG
Executive Director

REPORT ON PEMBERTON TOWNSHIP ORDINANCE 12-2019, ADOPTING THE ROWAN COLLEGE AT BURLINGTON COUNTY REDEVELOPMENT PLAN, AND ORDINANCE 13-2019, ADOPTING THE FORMER BURLINGTON COUNTY MINIMUM SECURITY CORRECTIONS AND WORK RELEASE CENTER REDEVELOPMENT PLAN

May 31, 2019

Pemberton Township
500 Pemberton-Browns Mills Road
Pemberton, NJ 08068

FINDINGS OF FACT

I. **Background**

The Township of Pemberton is located in eastern Burlington County, in the northwestern section of the Pinelands Area. Pinelands municipalities that abut Pemberton Township include New Hanover, Springfield, Southampton and Woodland Townships in Burlington County and Manchester and Plumsted Townships in Ocean County.

On June 3, 1983, the Pinelands Commission fully certified the Master Plan and codified Land Use Ordinances of Pemberton Township.

On April 3, 2019, Pemberton Township adopted Ordinance 12-2019, adopting a Redevelopment Plan for the Rowan College at Burlington County Redevelopment Area. Also on April 3, 2019, the Township adopted Ordinance 13-2019, adopting a Redevelopment Plan for the Former Burlington County Minimum Security Corrections and Work Release Center Redevelopment Area. The Rowan College at Burlington County Redevelopment Area is located in partially in a Pinelands Regional Growth Area and partially in a Pinelands Rural Development Area. The Former Burlington County Minimum Security Corrections and Work Release Center Redevelopment Area is located entirely within a Regional Growth Area.

The Pinelands Commission received certified copies of Ordinances 12-2019 and 13-2019 on April 9, 2019.

By letter dated April 15, 2019, the Executive Director notified the Township that Ordinances 12-2019 and 13-2019 would require formal review and approval by the Pinelands Commission.

II. Master Plans and Land Use Ordinances

The following ordinances have been submitted to the Pinelands Commission for certification:

- Ordinance 12-2019, adopting the Rowan College at Burlington County Redevelopment Plan, introduced on March 20, 2019 and adopted on April 3, 2019; and
- Ordinance 13-2019, adopting the Former Burlington County Minimum Security Corrections and Work Release Center Redevelopment Plan, introduced on March 20, 2019 and adopted on April 3, 2019.

These ordinances have been reviewed to determine whether they conform with the standards for certification of municipal master plans and land use ordinances as set out in N.J.A.C. 7:50-3.39 of the Pinelands Comprehensive Management Plan. The findings from this review are presented below. The numbers used to designate the respective items correspond to the numbers used to identify the standards in N.J.A.C. 7:50-3.39.

1. **Natural Resource Inventory**

Not applicable.

2. **Required Provisions of Land Use Ordinance Relating to Development Standards**

Rowan College at Burlington County Redevelopment Plan

Ordinance 12-2019 adopts a Redevelopment Plan for the Rowan College at Burlington County (RCBC) Redevelopment Area. The RCBC Redevelopment Area totals approximately 225 acres in size and is comprised of Block 843, Lots 1 and 10, and Block 843.01, Lot 1.01. It is located on the south side of Pemberton-Browns Mills Road (see Exhibit #1) and contains the former Burlington County College campus, more recently known as Rowan College at Burlington County.

According to the Redevelopment Plan, development of one or more mixed-use projects is envisioned, including recreation, residential, office, medical, light industrial and retail uses. The Plan specifically discourages a “piecemeal” redevelopment approach while acknowledging that there may ultimately be multiple owners and developers who seek to develop separate projects. The Plan also emphasizes the need to focus redevelopment efforts on the already disturbed and developed portions of the redevelopment area. This is a critical component of the Redevelopment Plan because lands outside the existing development footprint are nearly all comprised of wetlands and required wetlands buffer areas.

The RCBC Redevelopment Plan divides the new redevelopment area into three areas. Area 1, located along Pemberton-Browns Mills Road, contains lands on both sides of the Pemberton Bypass, including the existing RCBC athletic fields (see Exhibit #2). Area 2 extends east along Pemberton-Browns Mills Road to encompass the developed portion of the RCBC campus (see Exhibit #3). Areas 1 and 2 contain a total of 143 acres and are located entirely within a Pinelands Regional Growth Area. They are currently included in the Township’s GI

(Government Institution) District, where permitted uses are limited to a variety of county and municipal facilities. Area 3, which contains approximately 82 acres, includes the undisturbed portions of the RCBC campus (see Exhibit #4). Located in a Pinelands Rural Development Area, Area 3 is comprised almost entirely of wetlands and is currently located in the Township's R-3 (Single-Family Residential) District.

Within Area 1, the RCBC Redevelopment Plan permits multi-family dwellings and neighborhood commercial uses. Permitted uses in Area 2 are more expansive, including multi-family dwellings, office/light industrial "flex space", hospitals, health-care facilities, retail uses, low intensity recreational facilities, government offices and maintenance facilities and child care centers. Permitted uses in Area 3 are appropriately limited to low intensity recreational facilities.

A maximum density of 10 units per acre is permitted for residential development in Areas 1 and 2. Ten percent of all units in the RCBC Redevelopment Area must be set aside as affordable housing units. Pinelands Development Credits must be acquired and redeemed for 25% of all units in the RCBC Redevelopment Area, excluding any required affordable housing units. The Redevelopment Plan sets forth numerous additional standards for development, including those related to landscaping, screening, lighting, parking, circulation, internal walkways and greenways and building design and orientation. Redevelopers are encouraged to use LEED construction standards, with LEED certification required for new building construction and major renovation projects if such projects are funded by the Township or through funding awarded to the Township. Finally, the Redevelopment Plan requires that all development in the RCBC Redevelopment Area must comply with the minimum environmental standards of the Comprehensive Management Plan.

Former Burlington County Minimum Security Corrections and Work Release Center Redevelopment Plan

Ordinance 13-2019 adopts a Redevelopment Plan for the Former Burlington County Minimum Security Corrections and Work Release Center (CWRC) Redevelopment Area. The CWRC Redevelopment Area encompasses approximately 10 acres within the Township's Regional Growth Area and is comprised of portions of Block 812, Lots 9.01 and 9.03. It is located on the north side of Pemberton-Browns Mills Road (see Exhibit #5). In terms of existing development, the Redevelopment Area contains the County's former corrections and work release center, which the Redevelopment Plan describes as "vacant and obsolete", as well as an old access road. All lands in the CWRC Redevelopment Area are currently included in the Township's GI (Government Institution) District, where permitted uses are limited to various county and municipal buildings and facilities.

The CWRC Redevelopment Plan is intended to encourage residential development, foster the creation of new neighborhoods and provide opportunities to address the Township's future affordable housing needs. Pre-existing government uses are permitted to continue in the CWRC Redevelopment Area; however, the focus of the Redevelopment Plan is to provide standards for new residential development. Garden apartments, townhouses and semi-detached dwellings are all listed as permitted uses, with a maximum residential density of 8.0 units per acre. Ten percent of all units in the CWRC Redevelopment Area must be set aside as affordable housing units. Pinelands Development Credits must be acquired and redeemed for 25% of all units in the CRWC Redevelopment Area, excluding any required affordable housing units. In addition to providing standards for parking, residential design, landscaping, streetscape, lighting and

signage, the Redevelopment Plan also requires that all development in the CWRC Redevelopment Area must comply with all other municipal application requirements and development standards, as well as the Comprehensive Management Plan.

Residential Zoning Capacity

The Redevelopment Plans adopted by Ordinances 12-2019 and 13-2019 significantly increase residential zoning capacity in Pemberton Township's Regional Growth Area. In the CWRC Redevelopment Area, 80 new units are permitted. Residential zoning capacity in the RCBC Redevelopment Area is more difficult to estimate given environmental constraints and the resulting need to keep future development within the existing development footprint. Theoretically, the permitted 10 unit per acre density could be applied to all 143 acres in Areas 1 and 2 of the RCBC Redevelopment Area, resulting in a zoning capacity of over 1,000 units. Such a result is unlikely, given that at least a portion of the Redevelopment Area is expected to be developed for nonresidential uses. In addition, the maximum height limitations established in the Plan (30 feet in Area 1; 50 feet in Area 2) will limit the number of stories and resulting number of multi-family units in any proposed apartment buildings. A more realistic estimate of 340-400 new units was provided by the Township in its application for a grant from the Pinelands Infrastructure Trust Fund. Using that estimate, residential zoning capacity has increased by a total of 480 units as a result of the two redevelopment plans.

As noted above, the RCBC Redevelopment Plan permits residential development at a density of 10 units per acre. The CWRC Redevelopment Plan allows for a density of 8 units per acre. These permitted densities are significantly higher than what the Comprehensive Management Plan prescribes for Pemberton's Regional Growth Area. N.J.A.C. 7:50-5.28(a)1 and 3 require the Township to zone for a density of only 2.0 units per upland acre in its Regional Growth Area. However, the Comprehensive Management Plan does provide municipalities with the ability to zone portions of their Regional Growth Areas for higher densities, provided the lands in question are appropriate for more intensive development, infrastructure exists or can be provided to support the increased density and sufficient opportunities for the use of Pinelands Development Credits are provided. The RCBC and CWRC Redevelopment Areas meet these standards, even though they both contain significant wetlands. Redevelopment on existing impervious surfaces and within areas of existing disturbance is permitted under the Comprehensive Management Plan.

Ordinances 12-2019 and 13-2019 are consistent with the land use and development standards of the CMP. Therefore, this standard for certification is met.

3. Requirement for Certificate of Filing and Content of Development Applications

Not applicable.

4. Requirement for Municipal Review and Action on All Development

Not applicable.

5. Review and Action on Forestry Applications

Not applicable.

6. Review of Local Permits

Not applicable.

7. Requirement for Capital Improvement Program

Not applicable.

8. Accommodation of Pinelands Development Credits

Ordinances 12-2019 and 13-2019 adopt new redevelopment plans for a portion of Pemberton Township's Regional Growth Area. Based on these plans, residential development will be permitted at a density of 10 units per acre in the RCBC Redevelopment Area and at 8 units per acre in the CWRC Redevelopment Area, with the use of Pinelands Development Credits required for 25% of all proposed units. Units made affordable to low- and moderate-income households for purposes of satisfying the 10% set-aside requirement in the Redevelopment Areas are exempt from this Pinelands Development Credit requirement. Affordable housing units beyond the required 10% set-aside will require that Pinelands Development Credits be acquired and redeemed at the 25% rate.

The two Redevelopment Plans significantly increase residential zoning capacity and opportunities for the redemption of Pinelands Development Credits in the Township's Regional Growth Area. It is estimated that a total of 480 new units may be developed and 108 rights (27 Pinelands Development Credits) could be redeemed. These numbers are well in excess of what the Comprehensive Management Plan requires for Pemberton's Regional Growth Area.

It is important to note that the standards described above represent a departure from the traditional zoning and Pinelands Development Credit strategy outlined in N.J.A.C. 7:50-5.28(a). This section of the Comprehensive Management Plan anticipates that municipalities will establish "base" densities in their various Regional Growth Area zoning districts and then provide opportunities to increase such densities through the use of Pinelands Development Credits. In Pemberton's Regional Growth Area, the Comprehensive Management Plan establishes a "base" density of 2.0 units per developable acre and directs the Township to provide for "bonus" density through the use of Pinelands Development Credits to allow for a total of 3.0 units per developable acre. There is nothing in the CMP that prevents municipalities from exceeding these minimum requirements, which is exactly what Pemberton Township has elected to do. The Township has chosen to provide for higher density in these two new redevelopment areas as a means of spurring redevelopment, encouraging new commercial ratables and mixed use development and accommodating the municipality's future affordable housing needs. At the same time, the Township has adopted standards to ensure that Pinelands Development Credit use will be a significant part of whatever development projects ultimately come to fruition in the redevelopment areas.

Rather than relying on the traditional approach of providing developers with the *option* of using Pinelands Development Credits to increase permitted density, Ordinances 12-2019 and 13-2019 *guarantee* a PDC redemption rate of 25% for residential development within the Redevelopment Areas, with the exception of affordable housing units. Given the greater certainty provided by this approach, the Executive Director finds that the PDC requirements adopted by Ordinances 12-2019 and 13-2019 are consistent with Comprehensive Management Plan standards.

This standard for certification is met.

9. Referral of Development Applications to Environmental Commission

Not applicable.

10. General Conformance Requirements

Pemberton Township Ordinances 12-2019 and 13-2019, adopting the Rowan College at Burlington County and Former Burlington County Minimum Security Corrections and Work Release Center Redevelopment Plans, are consistent with the standards and provisions of the Pinelands Comprehensive Management Plan.

This standard for certification is met.

11. Conformance with Energy Conservation

Not applicable.

12. Conformance with the Federal Act

Pemberton Township Ordinances 12-2019 and 13-2019, adopting the Rowan College at Burlington County and Former Burlington County Minimum Security Corrections and Work Release Center Redevelopment Plans, are consistent with the standards and provisions of the Pinelands Comprehensive Management Plan. No special issues exist relative to the Federal Act.

This standard for certification is met.

13. Procedure to Resolve Intermunicipal Conflicts

The zoning changes adopted by Ordinances 12-2019 and 13-2019 through the two new redevelopment plans do not involve lands that are adjacent to any other municipalities. This standard for certification is met.

PUBLIC HEARING

A public hearing to receive testimony concerning Pemberton Township's application for certification Ordinances 12-2019 and 13-2019 was duly advertised, noticed and held on May 1, 2019 at the Richard J. Sullivan Center, 15C Springfield Road, New Lisbon, New Jersey at 9:30 a.m. Ms. Grogan conducted the hearing, at which no testimony was received

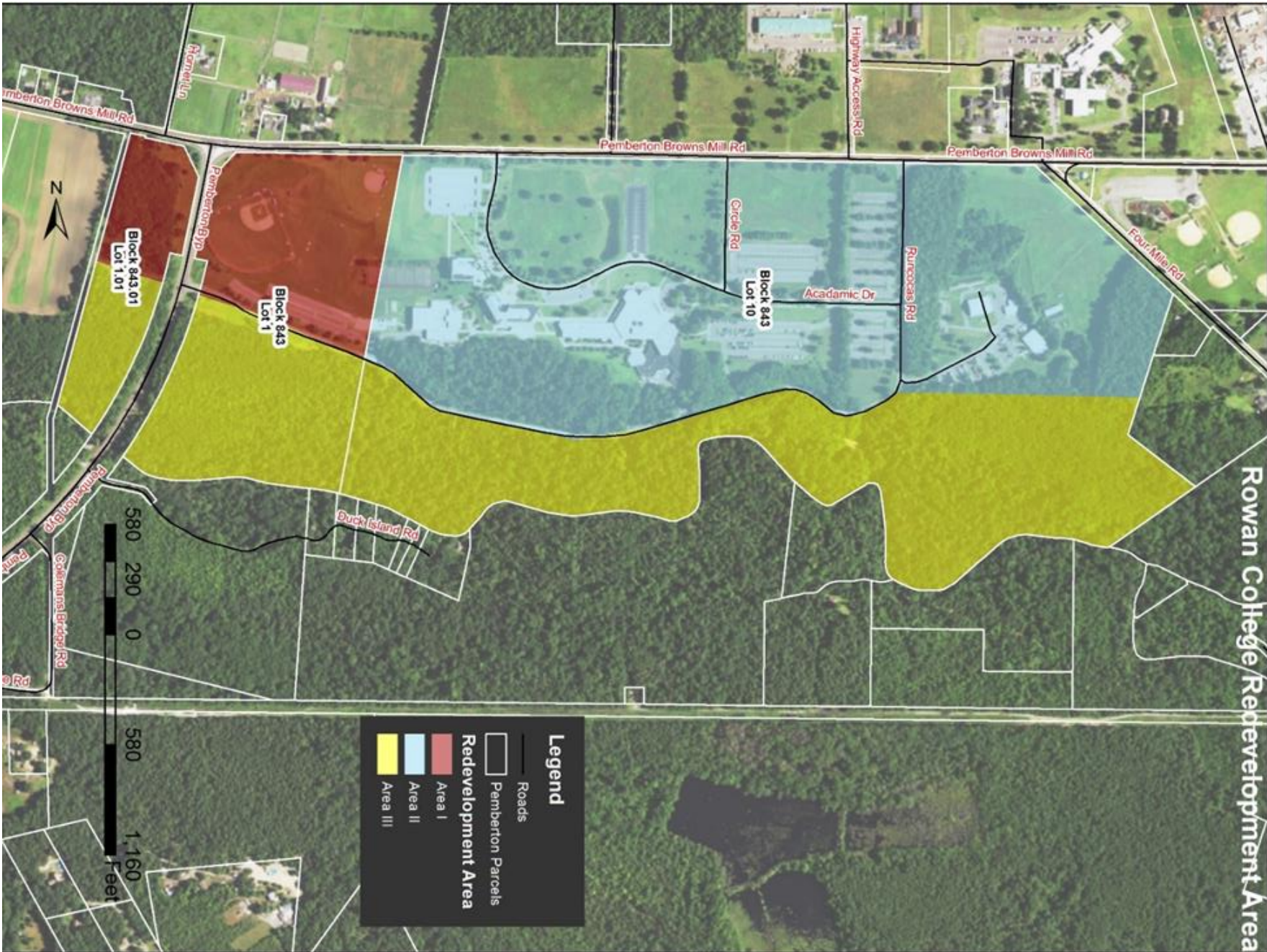
Written comments on Ordinances 12-2019 and 13-2019 were accepted through May 6, 2019; however, none were received.

CONCLUSION

Based on the Findings of Fact cited above, the Executive Director has concluded that Ordinances 12-2019 and 13-2019 are consistent with Comprehensive Management Plan standards for the certification of municipal master plans and land use ordinances. Accordingly, the Executive Director recommends that the Commission issue an order to certify Ordinances 12-2019 and 13-2019 of Pemberton Township.

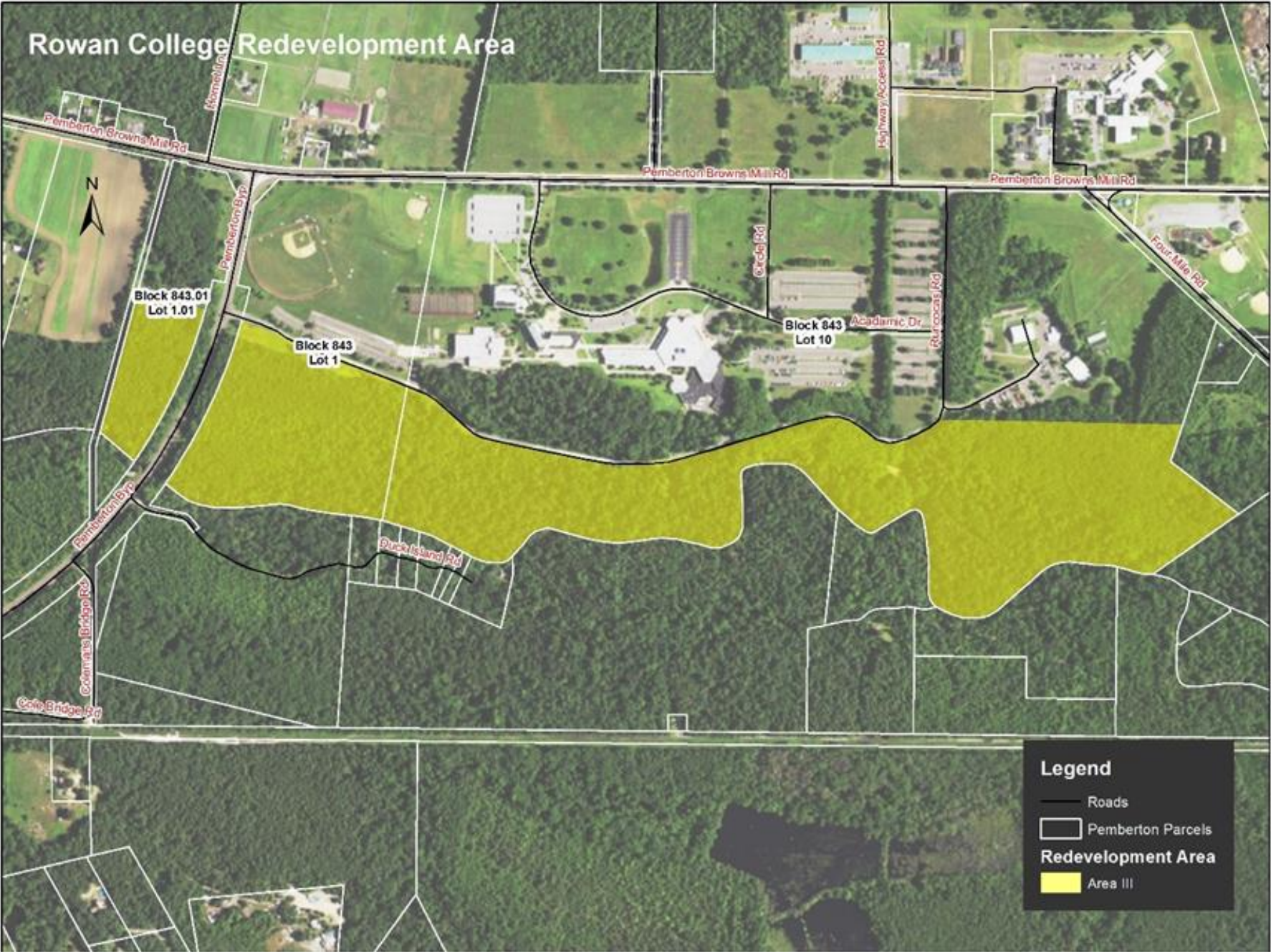
SRG/CPE

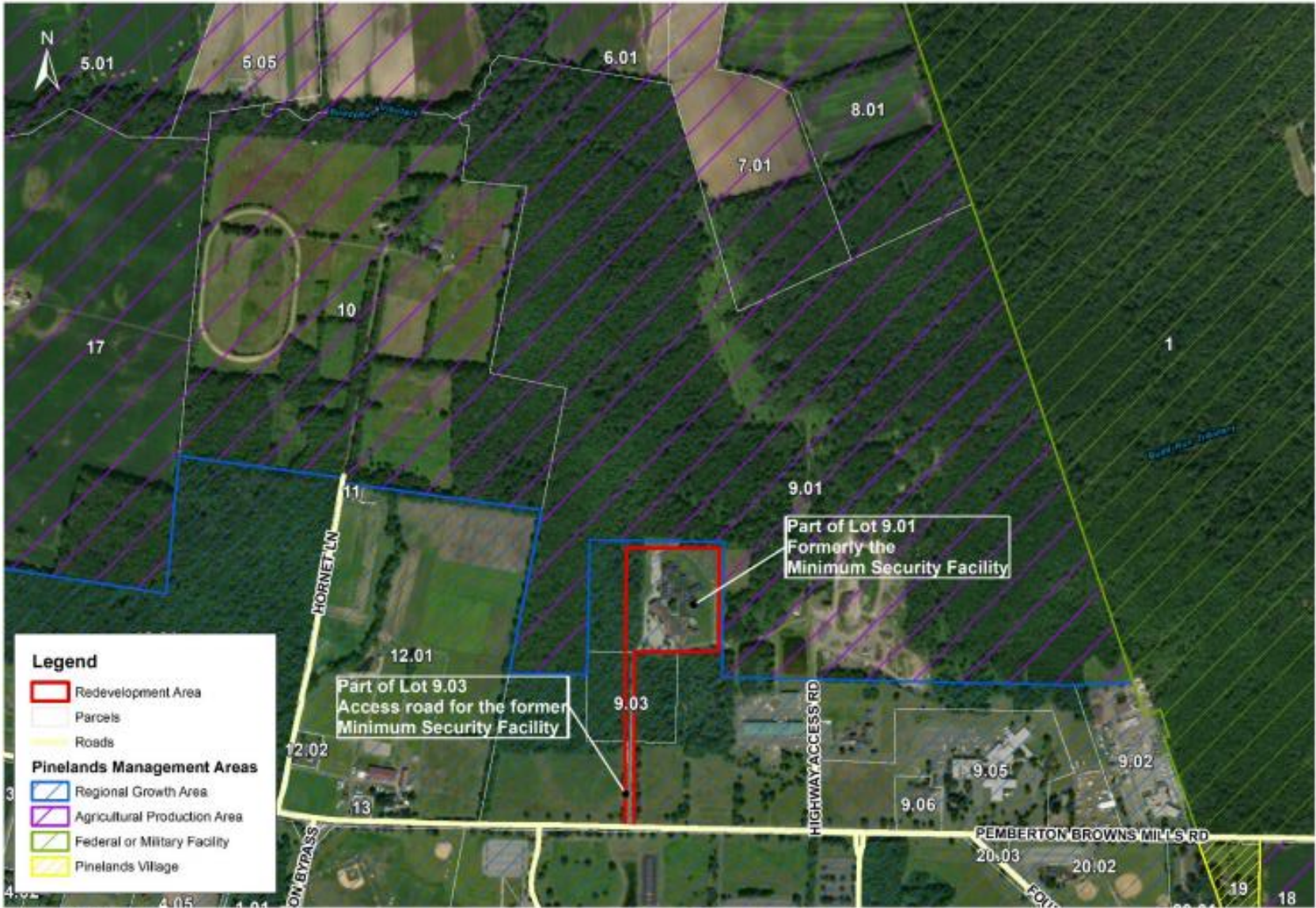
Attachments











Block 812, Lots 9.01 & 9.03
 Township of Pemberton
 Burlington County, NJ

0 215 430 860 Feet

Redevelopment Area
Former Burlington County Corrections and Work Release Center





RESOLUTION OF THE NEW JERSEY PINELANDS COMMISSION

NO. PC4-19- 24

TITLE: To Authorize the Executive Director to Continue to Expend Funds for Fiscal Year 2020 at the Same Level of Expenditures as Fiscal Year 2019 until the Adoption of the Fiscal Year 2020 Budget

Commissioner Avery moves and Commissioner Tick seconds the motion that:

WHEREAS, pursuant to the Pinelands Protection Act, the Pinelands Commission is charged with continuing implementation and monitoring of the Pinelands Comprehensive Management Plan; and

WHEREAS, it is anticipated that the New Jersey Legislature will appropriate \$2,949,000 to support the Commission's operations during Fiscal Year 2020; and

WHEREAS, pursuant to N.J.S.A 13:18A-5h, no action authorized by the Commission shall have force or effect until ten (10) days, Saturdays, Sundays and public holidays excepted, after a copy of the minutes of the meeting of the Commission has been delivered to the Governor for review, unless prior to expiration of the review period the Governor shall approve same, in which case the actions shall become effective upon such approval.

NOW, THEREFORE, BE IT RESOLVED that the Executive Director is authorized to continue to expend funds during Fiscal Year 2020 at the same level of expenditures as Fiscal Year 2019 until the Commission's adoption of the Fiscal Year 2020 Budgets.

Record of Commission Votes

	AYE	NAY	NP	A/R*		AYE	NAY	NP	A/R*		AYE	NAY	NP	A/R*
Ashmun	X				Irick	X				Quinn				X
Avery	X				Jannarone			X		Rohan Green				X
Christy	X				Lloyd	X				Prickett	X			
Earlen			X		Lohbauer	X								
Howell	X				Pikolycky	X								

*A = Abstained / R = Recused

Adopted at a meeting of the Pinelands Commission
Nancy Wittenberg
Nancy Wittenberg
Executive Director

Date: June 14, 2019
Richard Prickett
Richard Prickett
Chairman



State of New Jersey
 THE PINELANDS COMMISSION
 PO Box 359
 NEW LISBON, NJ 08064
 (609) 894-7300
 www.nj.gov/pinelands



PHILIP D. MURPHY
 Governor
 SHEILA Y. OLIVER
 Lt. Governor

General Information: Info@pinelands.nj.gov
 Application Specific Information: AppInfo@pinelands.nj.gov

RICHARD PRICKETT
 Chairman
 NANCY WITTENBERG
 Executive Director

LETTER OF INTERPRETATION #2179

June 7, 2019

Mark Villinger (via email)
 Ocean County
 129 Hooper Avenue, 1st Floor
 P.O. Box 2191
 Toms River, NJ 08754

Re: Application # 1983-4180.007
 Block 2500, Lot 7.01
 Lacey Road
 Lacey Township

FINDINGS OF FACT

The applicant owns the above referenced 403.87 acre parcel in Lacey Township. This acreage is based on the recorded property deed. The parcel is located in the Pinelands Preservation Area District. Pursuant to N.J.A.C. 7:50-4.72(a)1, the applicant is requesting a Letter of Interpretation (LOI) as to the number of Pinelands Development Credits (PDCs) which are allocated to this parcel.

The parcel consists of 365.13 acres of wooded uplands. The remaining 38.74 acres consist of wetlands as defined by N.J.A.C. 7:50-6.5(a). The applicant reserves the right to undertake field mapping to further refine the acreage of uplands and wetlands on the parcel. The parcel is vacant. There are no easements limiting the use of this parcel to nonresidential uses. No resource extraction operation or other development has been approved for this parcel pursuant to the provisions of the Pinelands Comprehensive Management Plan (CMP).

An application for a proposed resource extraction operation was previously initiated, but not completed, with the Pinelands Commission on a parcel that included Block 2500, Lot 7.01 (Application #1983-4180.003). An application for a forestry operation has been initiated, but not completed, with the Pinelands Commission on a parcel that included Block 2500, Lot 7.01 (Application #1983-4180.005).

CONCLUSION

The CMP grants, with certain exceptions, to every parcel of land in the Preservation Area District, a use right known as "Pinelands Development Credits," that can be used to secure a density bonus for lands located in Regional Growth Areas (N.J.A.C. 7:50-5.43). None of these exceptions apply to this parcel.

The CMP establishes the ratio by which Pinelands Development Credits are allocated in the Preservation Area District (N.J.A.C. 7:50-5.43(b)1). One Pinelands Development Credit is allocated for every 39 acres of uplands, except for certain uplands which have been approved for resource extraction operations. There are 0.2 Pinelands Development Credits allocated for every 39 acres of wetlands.

For the 365.13 acres of wooded uplands, the applicant is entitled to 9.36 PDCs. For the 38.74 acres of wetlands, the applicant is entitled to 0.20 PDCs. There would be 9.56 PDCs allocated to this parcel.

PDCs are transacted (allocated, severed and redeemed), with limited exceptions, in 0.25 PDC increments (0.25 PDC = 1 dwelling unit).

Therefore, there are 9.5 Pinelands Development Credits allocated to this 403.87 acre parcel.

This LOI for an allocation of PDCs is valid for five years from the date of issuance (N.J.A.C. 7:50-4.76(b)).

APPEAL

The CMP (N.J.A.C. 7:50-4.55) provides an interested party the right to appeal this LOI in accordance with N.J.A.C. 7:50-4.91. An interested party is someone who has a specific property interest sufficient to require a hearing on constitutional or statutory grounds. Only appeal requests submitted by someone meeting the definition of an interested party will be transmitted to the New Jersey Office of Administrative Law for hearing. Any such appeal must be made in writing to the Commission within eighteen days of the date of this LOI and must include the following information:

1. the name and address of the person making the appeal;
2. the application number;
3. a brief statement of the basis for the appeal; and
4. a certificate of service (a notarized statement) indicating that service of the notice has been made, by certified mail, on the clerk of the county, municipal planning board and environmental commission with jurisdiction over the property which is subject of this decision.

If no appeal is received within eighteen days of the date of this LOI, the LOI shall become binding.

If you are interested in “severing” the allocated PDCs from the parcel and/or information regarding the sale of PDCs, please visit the Pinelands Development Credit Bank’s website at <http://www.nj.gov/pinelands/pdcbank/> or contact the PDC Bank at 609-894-7300.

Sincerely,

A handwritten signature in black ink, appearing to read 'C. M. Horner', with a long horizontal flourish extending to the right.

Charles M. Horner, P.P.

Director of Regulatory Programs

- c: Secretary, Lacey Township Planning Board (via email)
- Lacey Township Construction Code Official (via email)
- Lacey Township Environmental Commission (via email)
- Secretary, Ocean County Planning Board (via email)
- Susan R. Grogan, Executive Director, PDC Bank (via email)



PHILIP D. MURPHY
Governor
SHEILA Y. OLIVER
Lt. Governor

State of New Jersey
THE PINELANDS COMMISSION
PO Box 359
NEW LISBON, NJ 08064
(609) 894-7300
www.nj.gov/pinelands



RICHARD PRICKETT
Chairman
NANCY WITTENBERG
Executive Director

General Information: Info@pinelands.nj.gov
Application Specific Information: AppInfo@pinelands.nj.gov

LETTER OF INTERPRETATION #2180

July 1, 2019

Mark Villinger (via email)
Ocean County
129 Hooper Avenue, 1st Floor
P.O. Box 2191
Toms River, NJ 08754

Re: Application # 1983-4180.006
Block 3500, Lot 1
Lacey Township
Block 2, Lot 1
Block 3, Lot 1
Block 4, Lot 1
Block 5, Lot 1
Ocean Township
Lacey Road

FINDINGS OF FACT

The applicant owns the above referenced 6,235.52 acre parcel in Lacey and Ocean Townships. This acreage is based on Lacey and Ocean Township tax maps.

The 6,235.52 acre parcel is comprised of the following individual lots:

Block 3500, Lot 1 (5,852.01 acres) in Lacey Township is located partially in a Pinelands Forest Area (3,238.87 acres) and partially in the Pinelands Preservation Area District (2,613.14 acres).

Block 2, Lot 1 (245.15 acres) in Ocean Township is located partially in a Pinelands Forest Area (236 acres) and partially in the Pinelands Preservation Area District (9.15 acres).

Block 3, Lot 1 (3.42 acres) in Ocean Township is located entirely in the Pinelands Preservation Area District.

Block 4, Lot 1 (6.02 acres) in Ocean Township is located partially in a Pinelands Forest Area (0.34 acres) and partially in the Pinelands Preservation Area District (5.68 acres).

Block 5, Lot 1 (128.92 acres) in Ocean Township is located partially in a Pinelands Forest Area (118.29 acres) and partially in the Pinelands Preservation Area District (10.63 acres).

Pursuant to N.J.A.C. 7:50-4.72(a)1, the applicant is requesting a Letter of Interpretation (LOI) as to the number of Pinelands Development Credits (PDCs) which are allocated to the 6,235.52 acre parcel.

The 6,235.52 acre parcel is located partially in a Pinelands Forest Area (3,593.5 acres) and partially in the Pinelands Preservation Area District (2,642.02 acres).

PDCs are not allocated to lands located in a Pinelands Forest Area.

The 2,642.02 acre portion of the parcel located in the Preservation Area District is vacant. No resource extraction operation or other development has been approved pursuant to the provisions of the Pinelands Comprehensive Management Plan (CMP) for the portion of the parcel located in the Pinelands Preservation Area District.

The CMP (N.J.A.C. 7:50-5.43(a)), in part, provides that PDCs are not allocated to lands which are subject to an easement limiting the use of the lands to non-residential uses. There are two Jersey Central Power and Light Company easements located on the portion of Block 3500, Lot 1 in Lacey Township that is located in the Pinelands Preservation Area District. The easements limit the use of 65.82 acres of Block 3500, Lot 1 in Lacey Township that are located in the Pinelands Preservation Area District to non-residential uses; prohibiting all buildings or structures.

The remaining 2,576.2 acres of the parcel located in the Pinelands Preservation Area District is not subject to an easement limiting the use of the lands to non-residential uses. The 2,576.2 acres consists of 2,288.17 acres of uplands and 288.03 acres of wetlands as defined by N.J.A.C. 7:50-6.5(a). The applicant reserves the right to undertake field mapping to further refine the acreage of uplands and wetlands on the parcel.

A forestry operation was previously approved pursuant to the provisions of the CMP on Block 3500, Lot 1 in Lacey Township (App. No. 1983-4180.001).

CONCLUSION

The CMP grants, with certain exceptions, to every parcel of land in the Pinelands Preservation Area District, a use right known as "Pinelands Development Credits," that can be used to secure a density bonus for lands located in Regional Growth Areas (N.J.A.C. 7:50-5.43). None of these exceptions apply to this parcel.

The CMP establishes the ratio by which Pinelands Development Credits are allocated in the Pinelands Preservation Area District (N.J.A.C. 7:50-5.43(b)1). One Pinelands Development Credit is allocated for every 39 acres of uplands, except for certain uplands which have been approved for resource extraction operations. There are 0.2 Pinelands Development Credits allocated for every 39 acres of wetlands.

For the 2,288.17 acres of uplands, the applicant is entitled to 58.67 PDCs. For the 288.03 acres of wetlands, the applicant is entitled to 1.48 PDCs. There would be 60.15 PDCs allocated to this parcel.

PDCs are transacted (allocated, severed and redeemed), with limited exceptions, in 0.25 PDC increments (0.25 PDC = 1 dwelling unit).

Therefore, there are 60.25 Pinelands Development Credits allocated to the 2,576.2 acre portion of the parcel located in the Pinelands Preservation Area District.

No PDC's are allocated to the 3,593.5 acre portion of the parcel located in a Pinelands Forest Area.

This LOI for an allocation of PDCs is valid for five years from the date of issuance (N.J.A.C. 7:50-4.76(b)).

APPEAL

The CMP (N.J.A.C. 7:50-4.55) provides an interested party the right to appeal this LOI in accordance with N.J.A.C. 7:50-4.91. An interested party is someone who has a specific property interest sufficient to require a hearing on constitutional or statutory grounds. Only appeal requests submitted by someone meeting the definition of an interested party will be transmitted to the New Jersey Office of Administrative Law for hearing. Any such appeal must be made in writing to the Commission within eighteen days of the date of this LOI and must include the following information:

1. the name and address of the person making the appeal;
2. the application number;
3. a brief statement of the basis for the appeal; and
4. a certificate of service (a notarized statement) indicating that service of the notice has been made, by certified mail, on the clerk of the county, municipal planning board and environmental commission with jurisdiction over the property which is subject of this decision.

If no appeal is received within eighteen days of the date of this LOI, the LOI shall become binding.

If you are interested in "severing" the allocated PDCs from the parcel and/or information regarding the sale of PDCs, please visit the Pinelands Development Credit Bank's website at <http://www.nj.gov/pinelands/pdcbank/> or contact the PDC Bank at 609-894-7300.

Sincerely,



Charles M. Horner, P.P.

Director of Regulatory Programs

- c: Secretary, Lacey Township Planning Board (via email)
 Lacey Township Construction Code Official (via email)
 Lacey Township Environmental Commission (via email)
 Secretary, Ocean Township Planning Board (via email)
 Ocean Township Construction Code Official (via email)
 Ocean Township Environmental Commission (via email)
 Secretary, Ocean County Planning Board (via email)
 Susan R. Grogan, Executive Director, PDC Bank (via email)



State of New Jersey

THE PINELANDS COMMISSION

PO Box 359

NEW LISBON, NJ 08064

(609) 894-7300

www.nj.gov/pinelands



PHILIP D. MURPHY
Governor

SHEILA Y. OLIVER
Lt. Governor

General Information: Info@pinelands.nj.gov
Application Specific Information: AppInfo@pinelands.nj.gov

RICHARD PRICKETT
Chairman
NANCY WITTENBERG
Executive Director

May 31, 2019

Jack O'Connor (via email)
Pine Barrens Adventure Camp, LLC
321 Osborn Avenue
Point Pleasant, NJ 08742

Re: Application # 1982-3054.087
Pine Barrens Adventure Camp
June 1 & 2, 2019
Bass River, Little Egg Harbor,
Mullica, Stafford
& Washington Townships

Dear Mr. O'Connor:

Pursuant to N.J.A.C. 7:50-6.143(a) of the Pinelands Comprehensive Management Plan, the completion of your application has resulted in the issuance of the enclosed *Off-Road Vehicle Event Route Map Approval*.

If you have any questions, please contact Brian Szura of our staff.

Sincerely,

for Charles M. Horner, P.P

Director of Regulatory Programs

Enc: Off-Road Vehicle Event Route Map Approval

c: Mullica Township Clerk (via email)
Bass River Township Clerk (via email)
Washington Township Clerk (via email)
Little Egg Harbor Township Clerk (via email)
Stafford Township Clerk (via email)
Robert Auermuller, Superintendent, NJ DEP Division of Parks and Forestry (via email)
Tom Keck, Regional Superintendent, NJ State Park Service - Southern Region (via email)



Philip D. Murphy
Governor

Sheila Y. Oliver
Lt. Governor

New Jersey Pinelands Commission
PO Box 359
New Lisbon, NJ 08064
(609) 894-7300



Richard Prickett
Chairman

Nancy Wittenberg
Executive Director

OFF-ROAD VEHICLE EVENT ROUTE MAP APPROVAL #1348

Application #: 1982-3054.087

Applicant: Pine Barrens Adventure Camp, LLC

Event Name: Pine Barrens Adventure Camp

Event Date: June 1 & 2, 2019

Municipalities: Bass River, Little Egg Harbor, Mullica, Stafford & Washington Townships

Management Area: Agricultural Production Area, Forest Area, Pinelands Village, Preservation Area District, Special Agricultural Production Area

Lands Utilized

Bass River, Penn and Wharton State Forests

Block 801, Lot 11

Mullica Township

Approved Route Map

60 mile route delineated on the route map received on May 30, 2019

for **Charles M. Horner, P.P.**
Director of Regulatory Programs

May 31, 2019

Date

Please see reverse side for additional information and conditions.

BACKGROUND

- ♦ The route utilizes existing sand roads, fire cuts and trails.
- ♦ The route utilizes public and private land.

CONDITIONS

- ♦ No deviation from the Approved Route Map shall occur without prior written approval from the Commission.
- ♦ No private lands shall be utilized without owner permission.
- ♦ No ORV event shall run until all necessary permits, approvals and authorizations have been obtained.
- ♦ In the event of cancellation or postponement, the Pinelands Commission shall be notified of the new date. A copy of the new insurance policy as well as documentation that the municipalities, the State Police, the State Forests, and any private land owners have been notified must also be submitted.



State of New Jersey

THE PINELANDS COMMISSION

PO Box 359

NEW LISBON, NJ 08064

(609) 894-7300

www.nj.gov/pinelands



PHILIP D. MURPHY
Governor

SHEILA Y. OLIVER
Lt. Governor

General Information: Info@pinelands.nj.gov
Application Specific Information: AppInfo@pinelands.nj.gov

RICHARD PRICKETT
Chairman
NANCY WITTENBERG
Executive Director

June 7, 2019

Michael Bradway (via email)
Pine Barrens Adventure Camp, LLC
1040 North Brewster Road
Vineland, NJ 08361


Re: Application # 1982-3054.088
Pine Barrens Adventure Camp
June 8th & 9th, 2019
Manchester, Pemberton, Southampton,
Tabernacle & Woodland Townships

Dear Mr. Bradway:

Pursuant to N.J.A.C. 7:50-6.143(a) of the Pinelands Comprehensive Management Plan, the completion of your application has resulted in the issuance of the enclosed *Off-Road Vehicle Event Route Map Approval*.

If you have any questions, please contact Brian Szura of our staff.

Sincerely,



for Charles M. Horner, P.P.
Director of Regulatory Programs

Enc: Off-Road Vehicle Event Route Map Approval

c: Pemberton Township Clerk (via email)
Southampton Township Clerk (via email)
Tabernacle Township Clerk (via email)
Woodland Township Clerk (via email)
Manchester Township Clerk (via email)
Jack O'Connor (via email)
Dave Robbins, Superintendent, Brendan T. Byrne State Forest (via email)
Tom Keck, Regional Superintendent, NJ State Park Service - Southern Region (via email)



Philip D. Murphy
Governor

Sheila Y. Oliver
Lt. Governor

New Jersey Pinelands Commission
PO Box 359
New Lisbon, NJ 08064
(609) 894-7300



Richard Prickett
Chairman

Nancy Wittenberg
Executive Director

OFF-ROAD VEHICLE EVENT ROUTE MAP APPROVAL #1349

Application #: 1982-3054.088

Applicant: Pine Barrens Adventure Camp, LLC

Event Name: Pine Barrens Adventure Camp

Event Date: June 8th & 9th, 2019

Municipalities: Manchester, Pemberton, Southampton, Tabernacle & Woodland Townships

Management Area: Forest Area, Infill Development Area, Pinelands Town, Pinelands Village, Preservation Area District, Rural Development Area,
Special Agricultural Production Area

Lands Utilized

Brendan T. Byrne State Forest

Approved Route Map

60 mile route delineated on the route maps received on June 5, 2019

June 7, 2019

Charles M. Horner, P.P.
Director of Regulatory Programs

Date

Please see reverse side for additional information and conditions.

BACKGROUND

- ♦ The route utilizes existing sand roads, fire cuts and trails.
- ♦ The route utilizes public land.

CONDITIONS

- ♦ No deviation from the Approved Route Map shall occur without prior written approval from the Commission.
- ♦ No private lands shall be utilized without owner permission.
- ♦ No ORV event shall run until all necessary permits, approvals and authorizations have been obtained.
- ♦ In the event of cancellation or postponement, the Pinelands Commission shall be notified of the new date. A copy of the new insurance policy as well as documentation that the municipalities, the State Police, the State Forests, and any private land owners have been notified must also be submitted.



State of New Jersey
 THE PINELANDS COMMISSION
 PO Box 359
 NEW LISBON, NJ 08064
 (609) 894-7300
 www.nj.gov/pinelands



PHILIP D. MURPHY
 Governor
 SHEILA Y. OLIVER
 Lt. Governor

General Information: Info@pinelands.nj.gov
 Application Specific Information: AppInfo@pinelands.nj.gov

RICHARD PRICKETT
 Chairman
 NANCY WITTENBERG
 Executive Director

MEMORANDUM

To: Members of the Commission

From: Charles M. Horner, P.P.^{C.M.H.}
 Director of Regulatory Programs

Date: July 1, 2019

Subject: Public Development Memorandum of Agreement (MOA) Determinations

Between June 4, 2019 and July 1, 2019, the Commission staff determined that the following public development application was consistent with the Commission approved public development MOAs and that the proposed development may proceed:

2013-0047.003 - Atlantic County Department of Regional Planning & Development

Proposed Development: Removal and replacement of the existing 8th Street Bridge superstructure and associated development

Please do not hesitate to contact me with any questions.



State of New Jersey
 THE PINELANDS COMMISSION
 PO Box 359
 NEW LISBON, NJ 08064
 (609) 894-7300
 www.nj.gov/pinelands




PHILIP D. MURPHY
 Governor
 SHEILA Y. OLIVER
 Lt. Governor

General Information: Info@pinelands.nj.gov
 Application Specific Information: AppInfo@pinelands.nj.gov

RICHARD PRICKETT
 Chairman
 NANCY WITTENBERG
 Executive Director

MEMORANDUM

To: Members of the Pinelands Commission

From: Susan R. Grogan 
 Chief Planner

Date: June 28, 2019

Subject: No Substantial Issue Findings

During the past month, we reviewed five ordinance amendments that we found to raise no substantial issues with respect to the standards of the Pinelands Comprehensive Management Plan. These amendments were:

Barnegat Township Ordinance 2019-8 - amends Chapter 55 (Land Use), Section 322, General Storm Water Requirements, of the Township's Code by requiring that discharges from roof drains and sump pumps be piped or directed to the street and away from adjoining properties.

Barnegat Township Ordinance 2019-9 - amends Chapter 55 (Land Use) Section 141, Applications Requiring Site Plan Approval, of the Township's Code to provide the Zoning Officer with the ability to administratively review and approve certain types of applications that are exempt from site plan review. Such application types include: proposed primary or accessory buildings for a home occupation or a home professional office; proposed changes of use from one permitted non-residential use to another permitted non-residential use; and any proposed change of use that is substantially similar as determined by the Zoning Officer.

Monroe Township Ordinance O:13-2019 - amends Chapter 175 (Land Management) of the Township's Code by revising the standards applicable to resource extraction operations in the Pinelands Area. Specifically, Ordinance O:13-2019 amends Section 175-130B(1)(a) to require that all areas of excavation, sediment ponds, storage areas, equipment, machinery, structures and facilities maintain a distance of at least 200 feet to any property line, unless it can be demonstrated that a distance between 100 and 200 feet will not result in greater off-site environmental impacts. The requirement to maintain a distance of 500 feet to any pre-existing residential structure or non-resource extraction related commercial use is deleted.

Washington Township Ordinance 2017-08 - adopts a Flood Damage Prevention Ordinance. The ordinance contains provisions intended to minimize public and private losses due to flood conditions and is applicable to areas of the Township defined as a special flood hazard area. The ordinance requires that a Development Permit consistent with the ordinance be obtained prior to construction or development within any area of special flood hazard. The ordinance contains administrative procedures for the submission and review of such applications as well as development standards for the prevention of flood damage.

Washington Township Ordinance 2018-4 - amends Ordinance 2017-08 by revising the definition of Substantial Damage, reassigning certain administrative responsibilities of the ordinance from the Construction Official to the Township Engineer, and establishing a permit review fee.